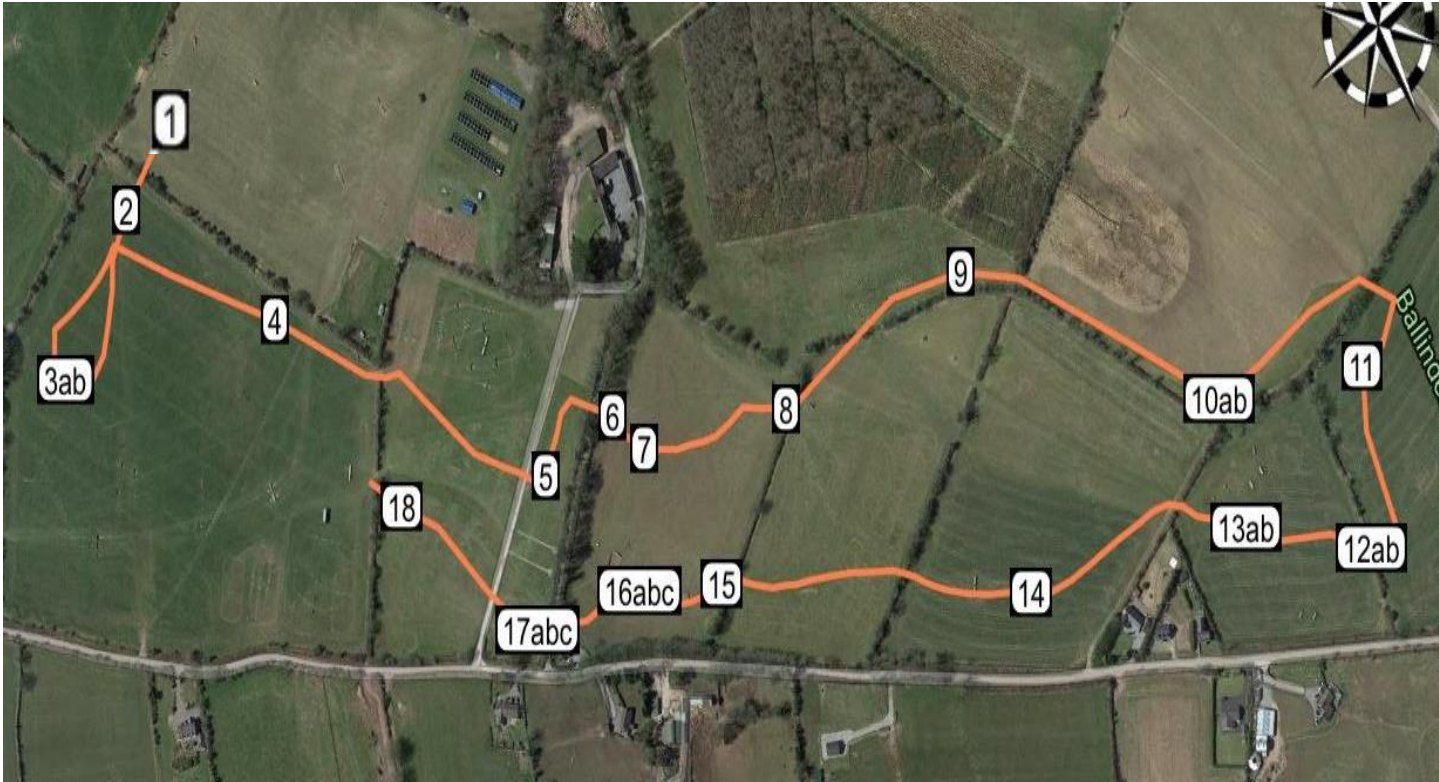


CCI2 & CCI2 for ponies - S
 Distance 2757 m
 Speed @ 520 m per m
 Time Allowed 5 m 19 s



CCI2 & CCI2 for ponies -S- Orange

- | | | | |
|------|-----------------|--------|------------------|
| 1: | Mim Rail | 10AB: | Barrels |
| 2: | Cottage | 11: | Fallen Tree |
| 3AB: | Log Stacks | 12AB: | Ramp Bank |
| 4: | Birch Box | 13AB: | Table to Corner |
| 5: | Polo Rail | 14: | Table |
| 6: | Avenue Crossing | 15: | Basket Hedge |
| 7: | Water Pond | 16ABC: | Castle Water |
| 8: | Fly Bank | 17ABC: | Avenue Crossing |
| 9: | Parallel | 18: | Wooden Polo Pony |

